

MAGAZINE

ISSUE NO. 10 SUMMER

It's for you!



**2023 HERTS OPEN STUDIOS
4 PAGE INSERT**

**FEATURED ARTIST:
ELSPETH HECTOR**

**ART GALLERIES: SUPPORTING
EMERGING ARTISTS**

WWW.HVAF.ORG.UK

IN THIS ISSUE...

This magazine issue has a lot of interesting content to offer!!! From welcoming new members to exploring partnership deals, there's something for everyone. This issue contains a plethora of thought-provoking information, such as:

- PAGE 3: WELCOME AND DIARY DATES
- PAGE 4: HINTS AND TIPS
- PAGE 5: LIVING CRAFT REVIEW
- PAGE 6: FEATURED ARTIST
- PAGE 8: AREA COORDINATORS
- PAGE 9: INTRODUCING OUR NEW AREA COORDINATOR
- PAGE 10: WORKSHOPS AND EXHIBITION
- PAGE 12: ELSPETH HECTOR

- PAGE 14: ART GALLERIES: SUPPORTING EMERGING ARTISTS
 - PAGE 16: THE MEMBERSHIP YEAR
 - PAGE 17: NEW WEBSITE
 - PAGE 18: ADVERTISING OPPORTUNITIES
 - PAGE 20: 5 GREAT THINGS TO EXPLORE
- PLUS OUR 4 PAGE OPEN STUDIOS PULL OUT!!**

5 GREAT REASONS TO BE A MEMBER

1. NETWORK AND COLLABORATE
2. MEMBER-ONLY EVENTS
3. NEWSLETTERS
4. OUR WEBSITE
5. SOCIAL MEDIA

FIND OUT MORE:

WWW.HVAF.ORG.UK/MEMBERSHIP



HVAF CHAIR: SALLY TAYLOR

WELCOME

We're midway through the year!!! Phew, that went by super fast! We started 2023 with a successful annual conference in January.

We have recently been welcoming artists' bookings to take part in our summer exhibition, the Big Art Fair and our Herts Open Studios!

This year, our summer event takes place in Hitchin 23 to 25 June (a different date to previous years). It is very popular so far.

Our featured artist, Amy Wilson, is definitely worth checking out. The section on the role of art galleries in supporting emerging artists is ideal for artists looking to expand their reach. Discover great opportunities for artists to learn and showcase their work through our workshops/exhibitions. We also have updates about Big Art Fair and Herts Open Studios events (they're just around the corner!) as well as details of our Area Coordinators.

Sally

PUBLICATION DATES

All information including articles, copy and images to be emailed to news@hvaf.org.uk

JULY: Compile issue - 10th

AUG: Copy deadline - 10th

SEPT: Issue 11 published

WELCOME TO *New & Returning Members*

WE ARE DELIGHTED TO WELCOME THE FOLLOWING CREATIVES INTO HERTS VISUAL ARTS.

CATHARTIC ARTS SW HERTS
ONE CREATIVE APE ST ALBANS
ADAM GWILT WELWYN & HATFIELD
AINE CORR E HERTS
ALAINA JENSON WELWYN & HATFIELD
ALEXA LOY N HERTS
ALEXANDRA TODD WELWYN & HATFIELD
ALICE CANNATELLA E HERTS
ALICE SMITHSON N HERTS
ALISON L GATES N HERTS
ANDREW PROTHERO HARPENDEN
ANDREW LALCHAN SW HERTS
ANNA SOPHIA PENNERY N HERTS
BEA BROWN N HERTS
BECKY ULLAH N HERTS
BEN ANREP N HERTS
BIRVA KAKU-SHAH SW HERTS
BRIAN REX N HERTS
BRONWYN EVANS E HERTS
CAROL SUMMERFIELD HARPENDEN
CAROLINE CLARK E HERTS
CAROLYN STOREY DACORUM
CATHY SMALE N HERTS
CHERYL FISHER N HERTS
CREATIVECOOON N HERTS
DANNY WILKINS HARPENDEN
DEBORAH PROTHERO HARPENDEN
DONICE SOUSA DACORUM
FIONA CHANEY WELWYN & HATFIELD
GEORGIA (ZETA) IAKOVOU E HERTS
GILL ANSTY DACORUM
GILLIAN WEDDLE N HERTS
GLORIA URECH N HERTS
GRAHAM BROCK HARPENDEN
HUMNA MUSTAFA N HERTS
IH CATEK SW HERTS
JACQUI WARREN HARPENDEN
JAMES PAGE E HERTS
JENNY KIMBER E HERTS
JENNY JONES N HERTS
JENNY BARNES HARPENDEN
JESSICA HYDE E HERTS
JO TEAGUE ST ALBANS
JONATHAN EMMERSON ST ALBANS

KAREN THOMAS N HERTS
KATHLEEN RAWLINGS WELWYN & HATFIELD
KERRY LANIGAN DACORUM
KIM RAYMONT N HERTS
KIM RASIT WELWYN & HATFIELD
LAURA BAKER WELWYN & HATFIELD
LAURE LEVY ST ALBANS
LEAH EDWARDS HARPENDEN
LINDA SMITH N HERTS
LISA BENTLEY N HERTS
LOUISE JONES SW HERTS
LYNN GULLIVER ST ALBANS
MARGARET CRUTCHLEY BARNET
MARIAN SHERAIDAH E HERTS
MARIANNE NIX BARNET
MARILYN ANDRETTI E HERTS
MARY HYDE HARPENDEN
MATHEW HEATON N HERTS
MATTHEW LLOYD-WINDER SW HERTS
MAXINE ELLIS ST ALBANS
MELANIE HALLS WELWYN & HATFIELD
MEMONA HULF ST ALBANS
MIYU TANG N HERTS
MOIRA THOMPSON SW HERTS
NATE FERGUSON E HERTS
NICOLA ANTHONY E HERTS
OMOROLAKE AKINULI WELWYN & HATFIELD
PHILIPPA BICKNELL ST ALBANS
PHYLLIS DUNSETH N HERTS
RANIA AIDLEY ST ALBANS
RAY POSTILL ST ALBANS
ROMEY BROUGH SW HERTS
SARAH COVENEY EVANS HARPENDEN
SARAH CUSTANCE N HERTS
SARAH JENKINS DACORUM
SARAH WESTON SW HERTS
SARAH BISSETT SCOTT E HERTS
SOPHIE CHRISTOPHY E HERTS
STEVE MCGUINNESS ST ALBANS
SUE PETERSON ST ALBANS
SUSAN MEHMET BARNET

TOULLA SIMON-HADJIGEORGIOU SW HERTS
TRACEY FERNANDES E HERTS
TRACEY PINNINGTON E HERTS
VANESSA WYLIE SW HERTS
VERZHINI ESMERYAN E HERTS
VICTORIA PALASTANGA E HERTS

WHO CAN JOIN HERTS VISUAL ARTS?

We welcome all artists and makers living and/or working in or near Hertfordshire. Our Members include Sculptors, Painters, Glass Artists, Fine Artists, Photographers, Textile Artists and many, many more creatives – from those just starting on their art journey to professional artists who have been creating for many years.

We provide a safe space where members can create and grow, share their work and get to know other Members – with no minimum requirements.

LIVING CRAFTS SHOWCASE REVIEW

Teamwork was the key to another enjoyable weekend at Hatfield Park. Many hands made light work from start to finish. Thank you to everyone for helping.

HVA's presence was highly visible in every way. Our centrally located marquee was festooned with colourful banners and bunting to draw attention. Eleven of our members had work exhibited in the Showcase Pavilion.

Footfall each day was varied. The weather and competing attraction of the Coronation definitely affected numbers. Those who visited HVA had plenty to see, with a wide variety of creative genre on offer. The ongoing demos attracted lots of interest and provided an excellent topic for a chat.

Living Crafts is a great opportunity to be seen and to build stronger ties with other local artists.



FIND OUT MORE:

WWW.HVAF.ORG.UK/OUR-EVENTS/LIVING-CRAFTS-SHOWCASE

FIND OUT MORE:

WWW.HVAF.ORG.UK/OUR-EVENTS/HINTS-AND-TIPS

Amy Wilson



natural world and love of colour. Her recent work explores the structures of plants and rugged landscapes found in coastal areas, featuring washed away weathered surfaces, and often taking inspiration from the deep textural effects that this harsh non relenting environment creates.

Alongside her artwork she also makes collections of contemporary woven products for the home with cotton yarns - handy purses in a range of sizes, relaxing lavender eye pillows and soft cosy cushions.

Amy will be showing her work in the Hitchin art trail which begins in the town centre on the 1st of July 2023 and is also exhibiting with the Herts Visual Arts textile group in 'Material

Textile artist Amy Wilson is the owner of Liliane Textiles, (established 2009) a design studio in North Hertfordshire that designs a range of handwoven fabrics for fashion and interiors, offering a bespoke service, and making small

collections of fabric accessories.

Working with blends of British wool, organic cotton, and experimental fibres, she samples ideas for cloth on traditional weaving looms. Amy's designs reflect her fascination with the

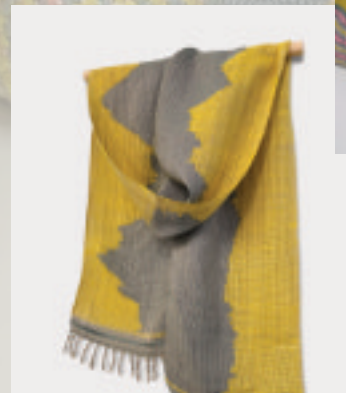
Evidence' at Courtyard Arts, Hertford which runs from the 1st - 25th November 2023.

Examples of her work are on display in the gallery space at The Baldock Arts & Heritage Centre, Courtyard Arts gallery shop and will soon also be available to buy in the newly refurbished café area at Southern maltings.

A range of weaving workshops and courses in various styles and accessible for everyone from complete beginners to more experienced participants are offered from Amy's studio in Baldock all year

round and new for Autumn 2023 a 10-week course will also be offered at the Letchworth Settlement.

Visit the Liliane Textiles website for more information on all the latest workshops and to see exciting new product collections. www.lilianetextiles.co.uk



Meet your **AREA COORDINATOR**

Sharing stories and experiences is such an important part of what Herts Visual Arts can offer.

Regular meetings with other artists provide a great way for sharing your art journeys and events coming up, plus helpful, practical, tips and tricks.

To find out more information about the meetings held in your area, email the local Area Coordinator, who will be happy to help.

INTRODUCING OUR NEW AREA COORDINATOR



We are delighted that we have new Area Coordinator. Kris Cruber has already been busy visiting venues, connecting with members nearby and holding meetings for artists. Our thanks go to Anna Schofield who worked for several years organising and hosting a large venue in the centre of Hemel Hempstead.

Kris is a fairly new member and a talented photographer using Generative Adversarial Networks (GAN) photography. He experiments with Artificial Intelligence (AI) and his own imaginative interpretations. To find out more about his work, please visit www.hvaf.org.uk/galleries/kris-gruber-minorkeyphotography.

SOUTH WEST HERTS/ NORTH LONDON:

swherths@hvaf.org.uk



VICTORIA CULF

HERTFORD/ EAST HERTS:

eherts@hvaf.org.uk



MAGGIE BIRCHALL

BARNET/N LONDON:

barnet@hvaf.org.uk

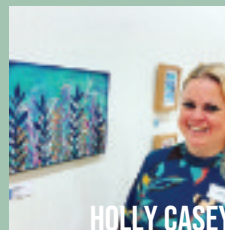
VACANT



YOU?

CENTRAL HERTS:

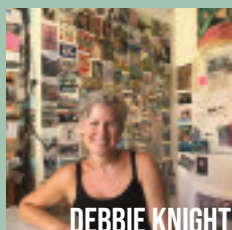
welwynhatfield@hvaf.org.uk



HOLLY CASEY

HARPENDEN/ NW HERTS

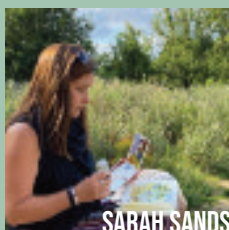
harpenden@hvaf.org.uk



DEBBIE KNIGHT

ST ALBANS AREA:

stalbans@hvaf.org.uk



SARAH SANDS

DACORUM:

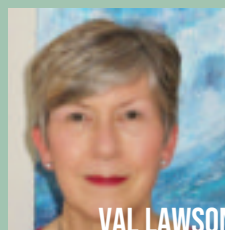
dacorum@hvaf.org.uk



KRIS GRUBER

NORTH HERTS

nherths@hvaf.org.uk



VAL LAWSON

FIND OUT MORE:

WWW.HVAF.ORG.UK/ABOUT/ORGANISING-GROUP

EXHIBITIONS

AFTER DARK

Date(s): Thurs July 6 -



Sat July 22
b: Thurs to Sat
evenings

Venue: Cabarrt Bar,
Market Theatre, Sun
Street, Hitchin
Cost: free

An exhibition by
Hitchin artists
organised by Kim
Raymont and James
Willis.

[www.hvaf.org.uk/
workshops-
exhibitions/after-dark](http://www.hvaf.org.uk/workshops-exhibitions/after-dark)

OPEN STUDIOS TASTER



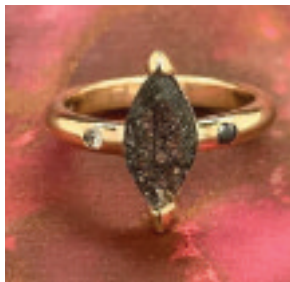
EXHIBITION

Date(s): Tues Aug 1 -
Sat Sept 30
Timing: 10am-4.30pm
Venue: EMC
Harpenden AL5 2FR
Cost: Free

A selection of work by
artists taking part in
Open Studios.

[www.hvaf.org.uk/
workshops-
exhibitions/open-
studios-taster-
exhibition](http://www.hvaf.org.uk/workshops-exhibitions/open-studios-taster-exhibition)

CRAFT IN FOCUS



Date(s): Fri Aug
25 - Mon Aug 28
Timing: 10am-5pm
Venue: RHS Hyde Hall
Cost: Free for RHS
Members. £11.10 in
advance.
RHS Hyde Hall,
Chelmsford, Essex,
CM3 8ET

ALDENHAM ART FESTIVAL

Date(s): Fri 8 - Sun
Sept 17
Timing: Fri - Sun for 2
weekends. Timing:
below

Venue: St John the
Baptist Church, Church
Lane, Aldenham, Herts
WD25 8BE
Cost: £2 Children free
Free parking available
at Aldenham Golf Club
(opposite the church).



[www.hvaf.org.uk/
workshops-
exhibitions/
aldenham-art-festival](http://www.hvaf.org.uk/workshops-exhibitions/aldenham-art-festival)

ROY'S ART FAIR



Date(s): Thurs Sept 28
Timing: TBC
Venue: OXO
Bargehouse
Cost: Free
OXO Bargehouse,
Tower Wharf,
Southbank, London
[www.hvaf.org.uk/
workshops-
exhibitions/roys-art-
fair-oxo-bargehouse-
london](http://www.hvaf.org.uk/workshops-exhibitions/roys-art-fair-oxo-bargehouse-london)



HERTS OPEN STUDIOS SEPT 9 - OCT 1

*"This year I had two other artists share with me
and it worked really well. We are all keen to
work together next time."*

*"It was a very positive
experience and I had a good
mix of visitors, sales and a
teaching opportunity."*

*"I always enjoy Open Studios.
It's a special part of my year."*

HERTS OPEN STUDIOS


WWW.HVAF.ORG.UK

FIND OUT MORE:

WWW.HVAF.ORG.UK/OUR-EVENTS/HERTS-OPEN-STUDIOS

FIND OUT MORE:

WWW.HVAF.ORG.UK/OUR-EVENTS



After 30 years of running this prestigious event, we believe we've got Open Studios cracked! With artists working in many different media, sharing their creative talents with visitors, there's something to appeal to everyone's taste. Our yellow signage is a welcome friend guiding you across the county to visit diverse venues. You can see studios, pop-ups, galleries, shops, theatres, museums, and much more.

This is a wonderful opportunity to look at finished and 'in progress' artwork, chat to the artists, and find out more about the tools and techniques they use.

This flagship event runs from 9 September to 1 October. It's a great opportunity to experience the world of art up close, and to meet the amazing artists in our community.

As in previous years, 2023 will see a professional printed Brochure distributed around the county as well as a downloadable pdf, and a virtual book in our online bookcase. Our Brochure features all the venue and artist information, PLUS artists in different areas around the county

will be producing their own art trails for you to enjoy. Every venue is free to visit. Many artists are offering special events and workshops during the three weeks, providing excellent opportunities to get involved. Our website is an excellent place to start!

There is a wealth of information at your fingertips through our interactive website. We have six windows giving you an adventure whilst exploring Open Studios before you've even left home. With a powerful search facility and artists' videos, you can glimpse into their world and see their art come to life. You can also follow [#HertsOpenStudios](https://twitter.com/HertsOpenStudios) on social media, where there are even more art experiences to discover. www.hvaf.org.uk

FIND OUT MORE:

WWW.HVAF.ORG.UK/OUR-EVENTS/HERTS-OPEN-STUDIOS



HERTS OPEN STUDIOS SEPT 9 - OCT 1



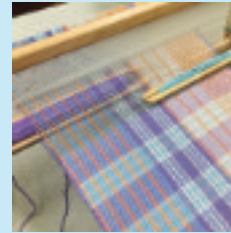
Plus many more artists!!!

FIND OUT MORE:

WWW.HVAF.ORG.UK/OUR-EVENTS/HERTS-OPEN-STUDIOS

WORKSHOPS

CREATIVE WEAVING COURSE



Date(s): Weds June 7 -
Weds July 19
Timing: 10-12pm
Venue: Baldock Arts & Heritage Centre
Cost: £120 (12 hr course including materials)
www.hvaf.org.uk/workshops-exhibitions/creative-weaving-course

BEGINNERS LINOCUT



Date(s): Thurs June 29
Timing: 9-11.30
Venue: Hitchin Lavender Farm
Cost: £35
www.hvaf.org.uk/workshops-exhibitions/beginners-linocut-hitchin-lavender-1

FIND OUT MORE:

WWW.HVAF.ORG.UK/WORKSHOPS

TEXTURED SILVER JEWELLERY



Date(s): Thurs, July 6
Timing: 6.30-9.30pm
Venue: The Wynd Gallery, Letchworth
Cost: £54.88
www.hvaf.org.uk/workshops-exhibitions/textured-silver-jewellery

SOUNDS AND COLOURS OF THE SPIRITUAL WORLD



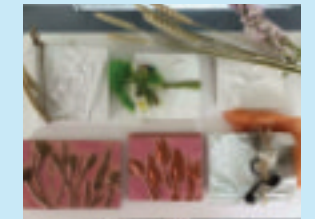
Date(s): Thurs July 13
Timing: 10am-1pm
Venue: Collective Gallery, Holywell Hill, St Albans
Cost: £35
www.hvaf.org.uk/workshops-exhibitions/sounds-and-colours-spiritual-world

START WITH BRUSHO



Date(s): Mon July 24
Timing: 10am-1pm
Venue: Letchworth Settlement.
Cost: £17
www.hvaf.org.uk/workshops-exhibitions/start-brusho-0

BOTANICAL PLASTER ART



Date(s): Thurs Sept 21, 2023 to Sun Oct 1
Timing: 11am-4pm
Venue: Galleria Shopping Centre, Comet Way, Hatfield AL10 OXR
Cost: £35 adults £10 children over 8
www.hvaf.org.uk/workshops-exhibitions/botanical-plaster-art-workshop

THE STITCHES OF

ELSPETH HECTOR

Without any artistic talent or a creative bone in my body (or so I thought), but with a love of knit and stitch (inherited from my mother) I completed City and Guilds Stitched Textiles Parts I & II in the 1990s. Though thoroughly enjoying the course, it confirmed my belief that, although technically competent, I was seriously lacking in design skills and had better stick to the day job! So, through lack of time and headspace while I was in full time employment, I became an embroiderer manqué, and turned to knitting to occupy me in idle moments and on my daily commute (probably annoying fellow passengers



in the



process with my clicking and clacking).

Like many knitters I disliked the sewing up and quickly abandoned garment making to focus on scarves, and my breakthrough moment came when a work colleague asked me to make a scarf for his wife and told me I should try to sell what I made. I did my first Herts Visual Arts Open Studios in 2003 and took a stall at a craft fair not long after, and haven't looked back.

Starting with my trademark Elspeth Jane scarves — distinctive, individual and eminently wearable pieces in a range of materials (wools, cottons, linens, silks, and other luxury fibres), shapes, sizes, textures and colours — I moved on to hand cosies, fingerless mittens, and more recently, hats. I then went over to the dark side to take in knitted jewellery. Brooches and corsages are a great way of using up

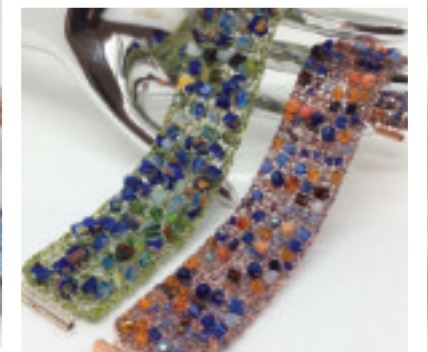
oddments of yarn, and knitted necklaces are a natural development from more traditional neckwear. Wanting to work with something firmer to make wristwear, I turned to knitting with wire and beads and eventually managed to produce some respectable looking bracelets incorporating beads, buttons, semi-precious stone chips, natural and glass pearls, sequins — in fact, anything with a hole in it through which I can thread wire.

To satisfy the more quirky and fun side of me I also make Curious Creatures (I think they are cats, really, but you can make of them what you will) as well as little felt headed mini-cats. I give each of my scarves a name of its own, so, obviously, I name my Creatures; but they also get a mini

character description to go with them. A love of alliteration has persuaded me



that, as these are Curious Creatures, their names and characters must begin with the letter C — so far no names or characters have been repeated! I will run out of appropriate adjectives beginning with C soon, so will have to think of an alternative alliteration — Absurd Animals or Bizarre Beasts, maybe? Watch this space



FIND OUT MORE:

WWW.HVAF.ORG.UK/GALLERIES/ELSPETH-HECTOR-ELSPETH-JANE

LETCWORTH EDUCATIONAL SETTLEMENT Summer School

From Friday 21st July to Friday 4th August, Letchworth Settlement will be running a Summer School of one-off workshops, talks and trips covering a wide variety of subjects.

These are open to everyone, including non-members. We've seen strong interest and enthusiasm for trying out new crafts and learning about new subjects from learners who've joined these sessions during the last year.

We're delighted that several of the Summer School sessions are being run by HVA members. Artists and crafters are working with us to shape these taster workshops and, where possible, these will developed into

future courses. This broadens the Settlement's offering, and allows HVA members to share their creative talent with new audiences. Exciting subjects introduced to the Settlement this year have included willow weaving, linocut printing, fixed heddle loom weaving and 3D embroidery.

To see our full Summer School programme go to www.letchworthsettlement.org.uk

Email info@letchworthsettlement.org.uk to receive our newsletter.

Call us – preferably during weekday office hours - on 01462 682828.



Follow us on social media: 'Letchworth Educational Settlement' on facebook, @letchworthsettlement on instagram.

SPONSORSHIP PACKAGES



WEBSITE SPONSOR £300 / PER YEAR (APRIL - MARCH)

This Sponsorship package is for a business's logo to be visible on the footer of the HVAF Website, with a hyperlink through to the Sponsor's own website.

EVENT SPONSOR @ £250

HVAF runs a number of events throughout the year, and has been able to promote these in the business community. What's included:

- Logo on our event brochure
- Participation in Sponsor's Choice Award and attendance at the Private View for in-person events
- Featured in our Social Media.

EVENT SPONSOR @ £25

In this package, the Sponsor's logo is positioned within our printed and digital catalogue.

Images to be minimum 300 dpi (print) / 800 pixels (web)

**AN IDEAL OPPORTUNITY
TO PROMOTE YOUR
BUSINESS TO HVAF
MEMBERS AND
VISITORS**

FIND OUT MORE:

WWW.HVAF.ORG.UK/PARTNERS/LETCWORTH-SETTLEMENT

FIND OUT MORE:

WWW.HVAF.ORG.UK/NEWS/SPONSORSHIP

THE ROLE OF ART GALLERIES IN SUPPORTING EMERGING ARTISTS

Art galleries are important to artists as they provide a venue to exhibit their works and they allow artists from all disciplines to display their artworks to the public. While the art market is heavily biased towards known artists, galleries need to encourage and bring in new and emerging artists in order to continue to grow their business. This helps galleries expand their brands and attract new collectors, both of which are critical to their long-term success.

Galleries not only provide a space for new and emerging artists they also assist in marketing and bringing artists and art lovers together. In some cases the galleries hold group exhibitions. These exhibitions showcase the work of various artists, promoting up-and-coming creatives.

Additionally, they give artists the chance to connect with a larger audience, network with other creators, and position themselves as competitors in the art world.

Art galleries can also provide financial aid to new and emerging artists in the form of grants, residencies, and other forms of funding. This support can assist artists in covering the costs of producing the work, allowing them to

focus on their creative practice without being distracted by financial concerns. In rare situations, galleries will offer to buy an artist's work outright, which can help the artist's career significantly.

Some art galleries provide mentorship to support new and emerging artists by using their relationships with collectors, curators, and other influential figures in the art world to help them develop professional networks and access to resources that would be difficult to obtain on their own. This mentorship can include pricing, marketing, presentation assistance and access to legal and financial tools to help manage their own businesses. Both new and emerging artists and art galleries profit from one another. Galleries discover and develop fresh talent that keeps them at the forefront of the art world.

They may also create a pool of potential artists for the future which allows them to expand and attract new collectors. New and emerging artists are given exhibition opportunities, financial assistance and mentorship.

- Courtyard Arts & Community Centre, Hertford.
- Art Nest Gallery, Hitchin.

- The New Maynard Gallery, Welwyn Garden City
- Rhodes Arts Complex, Bishop's Stortford
- Artshed Arts, Ware,
- The Forge Museum and Art Gallery, Much Hadham
- UH Arts: UH Arts is the arts organisation of the University of Hertfordshire, Hatfield
- The St Albans Museum and Gallery, St Albans
- The Gallery at Parndon Mill, Harlow
- Royston Museum and Art Gallery, Royston
- Trestle Arts Base, St Albans
- Broadway Studio and Gallery, Letchworth Garden City

These are a few typical requirements for artists to exhibit at galleries:

- Open Calls or Invitations: Galleries could issue open calls to artists asking them to submit their work for review. Artists may also be invited depending on particular projects, partnerships, or curatorial themes.
- Guideline: Many art galleries have rules or themes that apply to their displays. For their work to be chosen for an exhibition, artists must make sure that it adheres to these rules or topics.

- Application or Proposal: The gallery normally requires artists to send an application or proposal. This could include illustrations or a portfolio of their creative works, explanations or artist statements, along with other pertinent details regarding their field of endeavour.

Galleries may charge an exhibition fee or commission on the sale of artwork. Usually, the gallery and the artist discuss and agree upon this fee or commission prior to the exhibition. Some galleries charge as little as 0-20%, while others charge as much as 50%. It's crucial to keep in mind that these circumstances may differ between galleries and alter over time.

For the most recent information, it is always advised to study the particular needs and policies of each gallery and contact them directly.

Written by omorolake akinuli

CALLING ALL BUSINESS OWNERS!

So many of us are passionate about what we do, but less keen on the 'behind the scenes' tasks that come with running any business. From admin to accounts, motivation to marketing ... would you value a supportive sounding board and valuable contacts for your business?

Networking could be the answer! It's a great way of promoting what you do, gaining sales, support and connections.

SG1 is a truly unique business club. We're independent, so there's no pressure and little cost involved. Our goal is to help each other succeed.

Do you want networking with low cost? Great results? Fun?

Give it a go! Visit us twice for free. We meet fortnightly, 7.30am – 9am, alternating between online and in-person meetings (Stevenage). Our membership options are very flexible with one member from each sector.

Email us at breakfast@sg1-BusinessClub.co.uk – we'd love to welcome you soon!



FIND OUT MORE:
SG1-BUSINESSCLUB.CO.UK

DO YOU WANT TO REACH HUNDREDS OF HERTFORDSHIRE ARTISTS? WHY NOT ADVERTISE WITH US?

FULL PAGE: £100 / ISSUE
Portrait, 192 x 138 mm.

1/2 PAGE: £75 / ISSUE
Landscape, 90 x 138mm.

1/4 PAGE: £45 / ISSUE
Portrait, 70 x 90 mm.

DIRECTORY: £20 / ENTRY
Landscape, 138 x 20mm.

An ideal opportunity to promote your business to HVAF Members and visitors. For a directory entry, text and images should be supplied as a graphic.

READERSHIP, AUDIENCE & PURPOSE

Herts Visual Arts Quarterly magazine is the only local, art focused publication aimed at artists and art enthusiasts. We cover a range of topics featuring Member artists, events, marketing, developing our art journeys, as well as materials and related topics.

We have a regular readership which includes artists and interested enthusiasts around the county and beyond.



OUR MAGAZINE IS SUPPORTED BY SOCIAL MEDIA POSTS ON INSTAGRAM AND FACEBOOK

WEBSITE VISITORS

The HVAF Website is viewed each quarter with over 60,000 page views. We gain between 6,000 and 9,000 new visitors over a three month period, with over 1,500 of these returning visitors.

FIND OUT MORE:
WWW.HVAF.ORG.UK/MAGAZINE/ADVERTISING



5 Great things to explore

1

**ARTISTS, JOIN US NOW:
WWW.HVAF.ORG.UK/ARTISTS**

2

**DISCOVER OUR EVENTS:
WWW.HVAF.ORG.UK/OUR-EVENTS**

3

**ENJOY ART GALLERIES:
WWW.HVAF.ORG.UK/GALLERIES**

4

**SIGN UP FOR NEWS:
WWW.HVAF.ORG.UK/NEWS**

5

**FIND OPPORTUNITIES TO SPONSOR:
WWW.HVAF.ORG.UK/SPONSORSHIP**



**FIND OUT MORE:
ENQUIRIES@HVAF.ORG.UK**